

brochure
January 2026



Company Profile:

With over 35 years experience working as a select team of Interior Designers / Architects in the design sectors of Interior Architectural Design, 3D Visualisation, Shopfitting, Residential Interiors, Hi-End Fit-out and Bespoke Joinery Manufacture, we have established **Timperley Interior Design** as a top quality business within the Interior Architecture / Design and High-end Fit-out sector - the primary objective being to lead by example by portraying good practice in design ethos, and doing it right all of the time.

Modus Operandi:

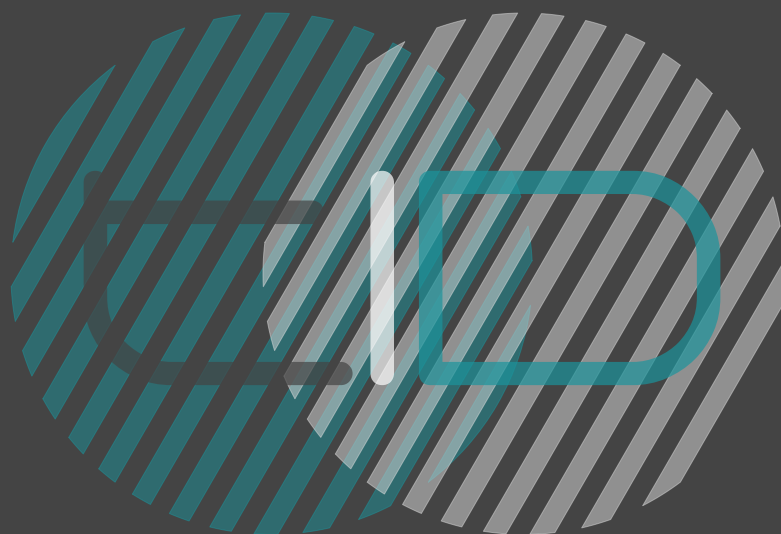
We believe that ultimate design solutions are best achieved by using a combination of experience, talent, skill and most of all with good common sense, by following the rules in respecting and implementing Building Control / CDM Regulations in tandem to Health & Safety during any turn-key design process from **concept - design - manufacture - installation - design management - completion - sign-off**.

Our Motivation:

Interior Architecture and Design is our passion and we feel extremely fortunate to enjoy continued success working in the interior design business sector which continues to inspire our team in providing design solutions with flair and creativity, to the utmost professionalism.

Design Sectors we specialise and work in:

Hospitality	hotel, bar, restaurant and coffee bar interiors
Workplace	office interiors
Shopfitting	retail interiors
Exhibition	exhibition stands for hospitality and retail
Residential	hi-end kitchens and domestic interiors
Fit-Out	manufacture and install drawing packages
Furniture	bespoke joinery for all sectors
Engineering	metalwork frameworks & components



Paul Timperley BA(Hons) Interior Architecture
Design Director



Paul is the Team Principal, a Senior Interior Architectural Designer and Design Manager, having a wealth of experience working as a professional designer for 35 years within the Interior Architecture and Design, Shopfitting, Workplace, Hospitality, Residential Design, Design & Build and Production-Manufacture -Fit-Out design sectors, with a proven track record in Design Management and 'hands-on' job running from design concept to completion incorporating installation for turn-key projects.

Accreditations:

I am extremely proud to have been awarded several **Design Awards** across various design sectors of interior design, exhibition design, residential & kitchen design, product design, lighting design and graphic design.



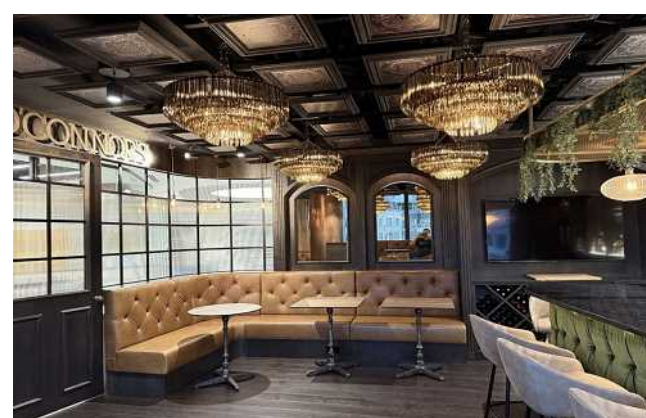
retail & office project GORTAVOY Pomeroy, Co Tyrone
project brief: retail interior design package

This stunning upgraded retail business and office suite, is located in County Tyrone. TID were commissioned to produce the full Interior Design Concept for the extension to the premises which included all design drawings for the Layout GA Plan, Flooring, Ceiling & Lighting, Bespoke Joinery, Furniture, M&E, Metalwork Shelving Profiles, Lifestyle Graphics and Shopfront Design. TID also managed the Tender Package and Technical Fit-out Drawing Package.



wine bar project STONE-X London
project brief: hospitality interior design package

Have you ever heard of a traditional authentically styled English pub located within a modern workplace? This unique lounge and wine bar project is incorporated inside a famous London office block. TID provided the interior design concept drawing package for the GA Layout, Flooring Design, Ceiling Design, Lighting Design, Front Bar Counter, Back Bar Display, Feature Wall Displays, Banquette Seating, Suspended Island Gantry, Wall Panelling, Internal Shopfront, Furniture and Sampleboard.



residential project PENTHOUSE Dublin

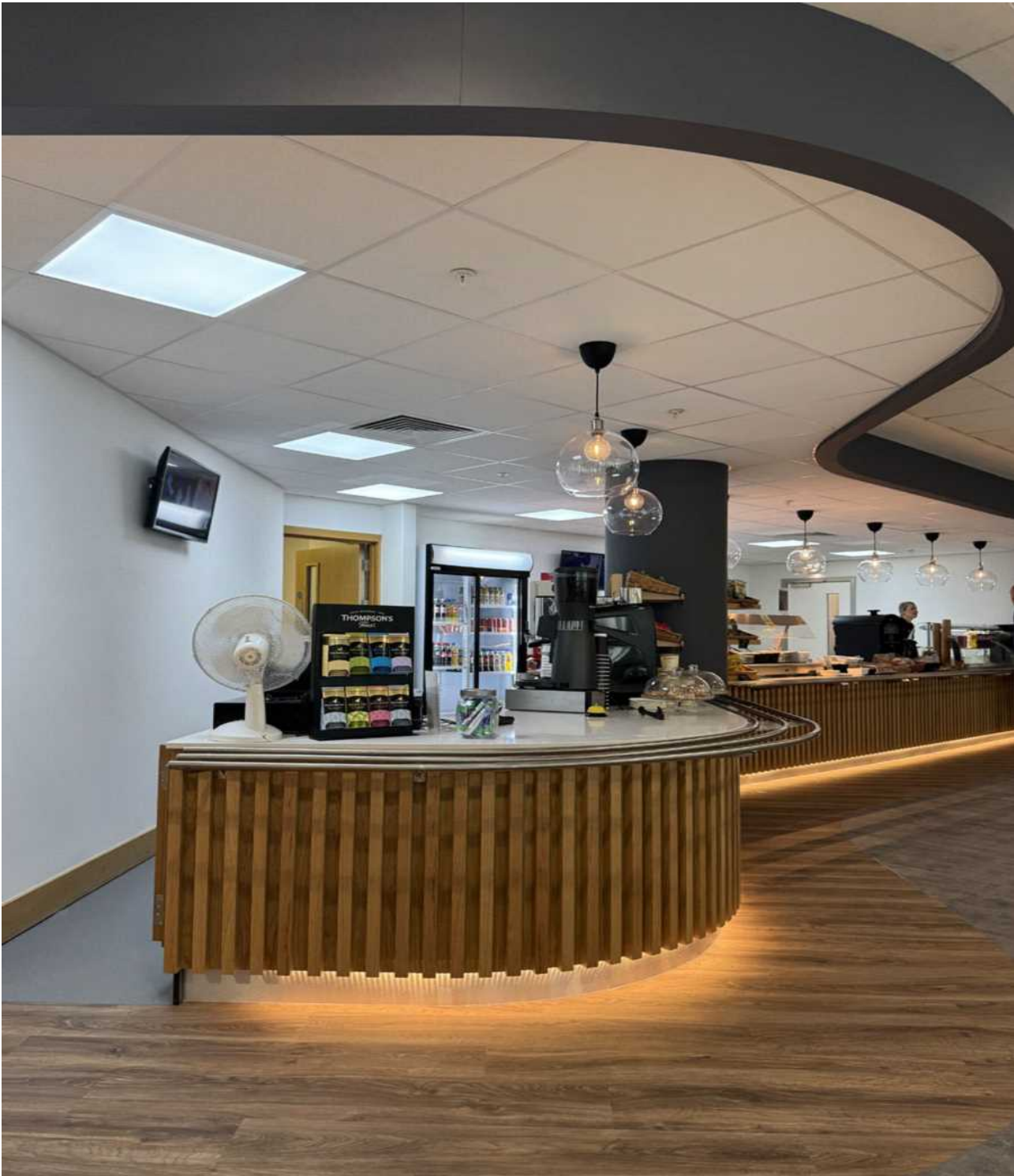
project brief: fit-out drawing package & design development

TID collaborated with the fit-out contractor and architect in providing the manufacture and fit-out drawing package for all bespoke joinery in this new-build top end penthouse apartment, including design development of joinery for the kitchen and living spaces. We were involved in the kitchen & utility, living room, media walls, partition doors, wall and ceiling panelling, bedroom furniture & panelling, walk-in wardrobes, M&E storage walls, bathroom vanity units and door package.



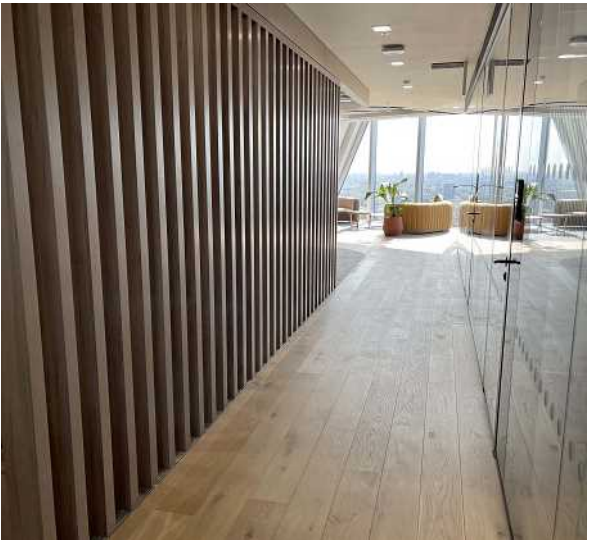
hospitality project THE GLASS HOUSE - INVEST NI Belfast
project brief: interior design & fit-out design

The client's desire was to create a contemporary, functional and comfortable coffee bar & cafeteria for all staff within the building to enjoy their coffee and lunch breaks, whilst also creating a feature space where informal client meetings could take place. The new feature contoured counter servery area needed to be spacious, versatile and be capible of serving large groups of people quickly. Booth seating, high tables & stools and coffee tables & chairs cater for everyone's seating preference, whilst being easily cleared away for various business functions. New LVT and safety flooring throughout, new ceilings, bulkhead, lighting, bespoke joinery interior shop front and lifestyle / branding graphics creates a dynamic contemporary interior, for staff and the public to enjoy breaks and meetings.



hospitality & office project **BROADGATE TOWER** London
project brief: fit-out drawing package & design management

This majestic and iconic building in London City Centre is the new home for Aldermore Bank HQ, located on several upper floor levels. TID co-ordinated with the interior design consultancy and fit-out contractor in designing the complete drawing package for manufacture and installation of all bespoke joinery, metalwork ceiling gantries, and door schedule.





© All Rights Reserved
TIMPERLEYinteriordesign

TID Consultants
t: +44 (0)7597 225738
e: studio@timperleyinteriordesign.co.uk
w: timperleyinteriordesign.co.uk

Testimonials

Emmet McKenna, Managing Director - Truwood, Monaghan

"Truwood have engaged with TID on numerous projects over the past couple of years. In that time, I have had the pleasure of working closely with Paul and have always found him to be professional, diligent and trustworthy. During his time contracting with us, Paul consistently produced high-quality drawings and technical work. His strong attention to detail, efficiency, and thorough understanding of project requirements made him a dependable contributor to our team. He also communicated clearly and met deadlines throughout, ensuring smooth coordination with both our staff and clients. Paul approached each project with reliability and professionalism, and I found him excellent to work with. I would have no hesitation in recommending him to other clients".

Steven Gilkinson, Manager - Gortavoy Offices & Retail, Pomeroy

"Working with Paul and his team was an absolute pleasure! From the initial consultation to the final touches, Paul truly transformed our offices and retail store into something beyond what we imagined. Paul took the time to understand our style, with working in an agricultural retail environment, blending functionality with aesthetics perfectly. His attention to detail, creativity, and professionalism made the entire process seamless and enjoyable. We couldn't be happier with the results and highly recommend them to anyone looking to elevate their offices, retail space and business in general".

Darren Atkinson, Managing Director - Aspire-Create, Bangor

"I have known and worked with Paul, of Timperley Interior Design for over 18 years. During that time we have sub-contracted a significant number of projects to Paul both in Interior design (shopfitting and work place design) and high-end fit-out of various commercial premises. Paul is highly experienced in his field and brings a diverse skillset to interior design, design management and fit-out design. He has shown excellent communication skills throughout his years working with my team at Aspire-Create and it has been an absolute pleasure knowing and working with Paul. We are very happy to work with Paul on an ongoing basis to provide high quality fit-out drawings to support the team".

Mark Sexton, Director - MS Interiors & Design Ltd, Oxfordshire

"MS Interiors & Design Ltd have had the pleasure of working with Timperley Interior Design on a number of high-end joinery packages for commercial fit-out projects. We have always found Paul to be extremely efficient and competent, in addition to his talent as a furniture designer his ability to complete complex projects rapidly in order to meet deadlines has been a huge help for us. I look forward to working with Timperley Interior Design on our forth-coming projects".

Adrienne McLeer, Owner - Residential New Build, Hillsborough

"We just want to say a big thank you to Timperley Interior Design for the timely completion of our new kitchen and over-all interior installation - from planning, designing, communicating, installing and finishing, your work has been exemplary. The finished result has not only wowed us but also our friends and family. Every small detail has been designed and executed with total precision and the highest quality. Thank you to Paul and his team for working with us, listening, advising and making our dream home a reality!"